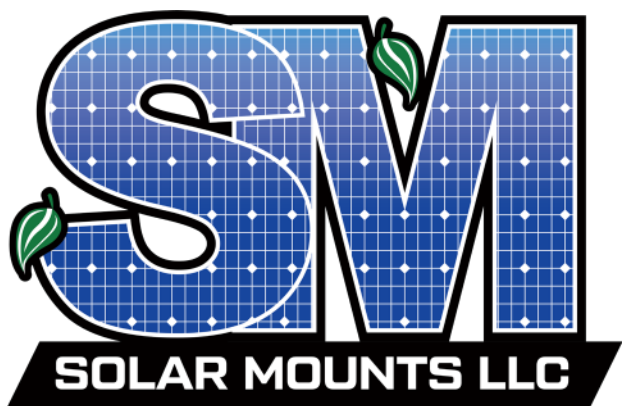


# **GALACTIC SERIES SOLAR CARPORT MOUNTS**

***SIMPLE & EFFICIENT***

**25 YEAR  
WARRANTY**

**Commercial & utility-scale solar racking with reduced components and minimal installation time. Over a decade of proven reliability and a 25-year warranty to serve the lifetime of your solar array.**



**Featuring fewest components and hardware connections in the market with high flexibility for rough and variable terrain. The panel attachments feature weather-resistant grounding clamps, hot-dipped & G185 galvanized steel, and can sustain high wind and snow loads.**

**Call for immediate estimates and layout design assistance from our expert sales team.**



**844-757-7225**

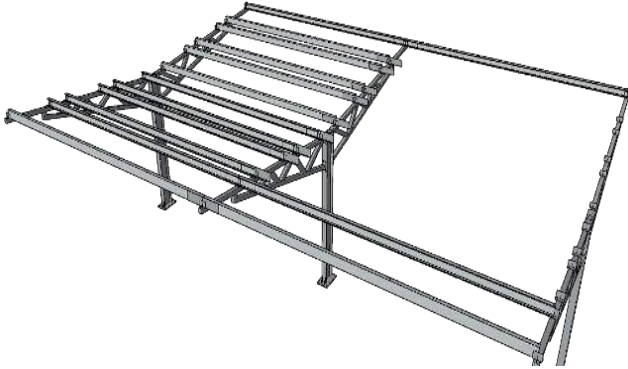
[WWW.SOLARMOUNTS.COM](http://WWW.SOLARMOUNTS.COM)

**300 WOOLLEY DR. | MARSHALL, MI 49068**

[INFO@SOLARMOUNTS.COM](mailto:INFO@SOLARMOUNTS.COM)

# TECHNICAL INFORMATION

**25 YEAR  
WARRANTY**



## TECHNICAL CHARACTERISTICS

APPLICATION	Parking Lot, Walkway, Building Entrance, etc.
FOUNDATION	Concrete Pier, Spread Footing, Helical Options
ORIENTATION	Portrait – 1-8 H [Custom Long-Span Options Available]
TRUSS STYLE	T-Frame, Y-Frame, L-Frame, & A-Frame
POST SPACING	27'-0" Standard 36'-0" Custom
TILT ANGLES	3°, 5°, & 7° Standard
CLEARANCE	14'-0" Standard
MAX GRADE	North-South / East-West 30° Tolerance
SNOW LOAD	0 – 80 PSF
WIND LOAD	0 - 170 MPH
MATERIAL	Hot-Dipped & G185 Galvanized Steel
MODULE CAPABILITY	Any Module, Industry Wide
WARRANTY	25 Year

## FEATURES & BENEFITS

- 4 main components & minimal hardware
- Pre-welded tilt angles
- Universal brackets to fit any panel, industry-wide
- Stocked components for industry best lead times
- PE stamped drawings
- Accommodates difficult terrain



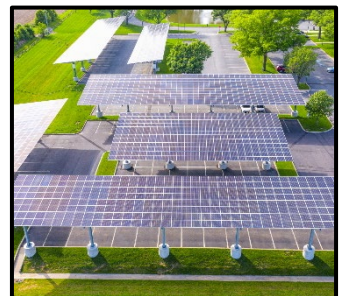
**4.7 MW  
WESTCHESTER, NY**



**2.8 MW  
BROCKTON, MA**



**1.1 MW  
HORSHAM, PA**



**880 kW  
FOLSOM, NJ**



**844-757-7225**

[WWW.SOLARMOUNTS.COM](http://WWW.SOLARMOUNTS.COM)

300 WOOLLEY DR. | MARSHALL, MI 49068

[INFO@SOLARMOUNTS.COM](mailto:INFO@SOLARMOUNTS.COM)

# COMPONENET OVERVIEW

**25 YEAR  
WARRANTY**

## MAIN COMPONENTS

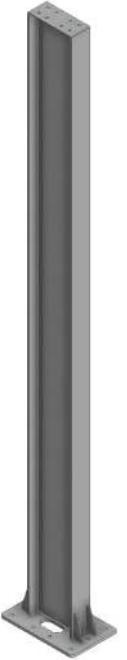


**TRUSS**  
[PAINTED FINISHES AVAILABLE]



**PURLIN STIFFENER**

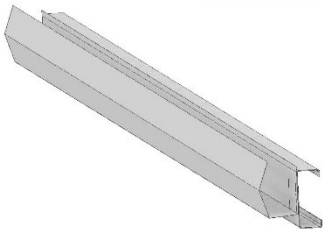
**POST**  
[PAINTED FINISHES AVAILABLE]



**27'-0" PURLIN**

## MODIFICATION OPTIONS

**WATERPROOFING  
GUTTERS & DOWNSPOUTS**



**SNOW GAURDS**



**LED LIGHTING**



**844-757-7225**

[WWW.SOLARMOUNTS.COM](http://WWW.SOLARMOUNTS.COM)

300 WOOLLEY DR. | MARSHALL, MI 49068

[INFO@SOLARMOUNTS.COM](mailto:INFO@SOLARMOUNTS.COM)

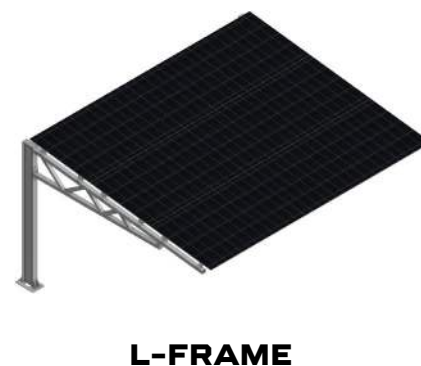
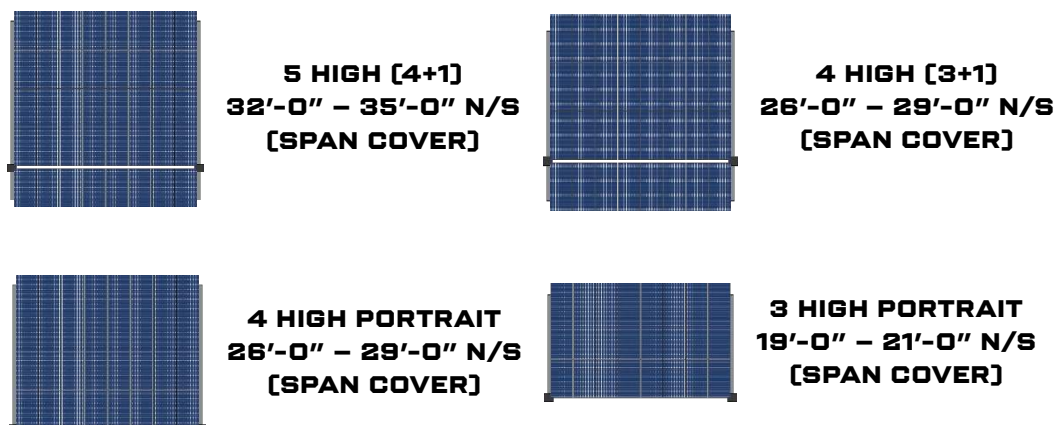
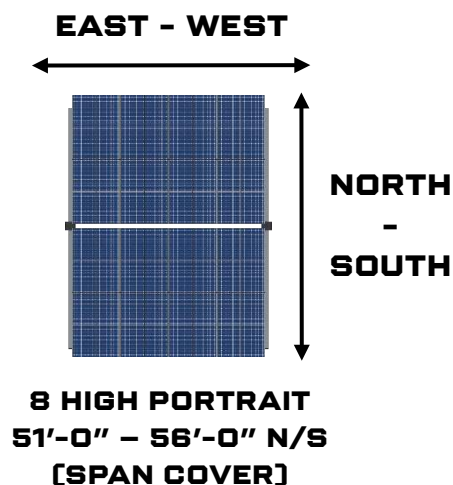


# LAYOUT CONFIGURATIONS

**25 YEAR  
WARRANTY**

27'-0" STANDARD E/W [POST-TO-POST]

18'-0" – 36'-0" CUSTOM E/W [POST-TO-POST]



# IMPORTANT INSTRUCTIONS

THIS FORM MUST BE FILLED OUT AND RETURNED TO SOLAR MOUNTS LLC  
WITHIN 4 WEEKS OF PROJECT INTERCONNECTION BY END USER TO  
QUALITY FOR WARRANTY COVERAGE. PLEASE EMAIL COMPLETED FORM  
TO [INFO@SOLARMOUNTS.COM](mailto:INFO@SOLARMOUNTS.COM) ATTN: WARRANTY

## TYPE OF SYSTEM:

CARPORT \_\_\_\_\_ WALKWAY \_\_\_\_\_ POST-DRIVEN GROUND MOUNT \_\_\_\_\_  
BALLASTED GROUND MOUNT \_\_\_\_\_ WALKWAY \_\_\_\_\_ ROOF MOUNT \_\_\_\_\_

## OPERATOR:

NAME \_\_\_\_\_  
PHONE \_\_\_\_\_  
EMAIL \_\_\_\_\_  
ADDRESS \_\_\_\_\_

## INSTALLER:

NAME \_\_\_\_\_  
PHONE \_\_\_\_\_  
EMAIL \_\_\_\_\_  
ADDRESS \_\_\_\_\_

NAME \_\_\_\_\_  
PHONE \_\_\_\_\_  
EMAIL \_\_\_\_\_  
ADDRESS \_\_\_\_\_

PURCHASE DATE: \_\_\_\_\_

FOUNDATION INSTALLATION DATE: \_\_\_\_\_

INITIAL COMMISSIONING DATE: \_\_\_\_\_

INSPECTION DATE: \_\_\_\_\_

FINAL COMMISSIONING / IN-SERVICE DATE: \_\_\_\_\_



**844-757-7225**

[WWW.SOLARMOUNTS.COM](http://WWW.SOLARMOUNTS.COM)

300 WOOLLEY DR. | MARSHALL, MI 49068

[INFO@SOLARMOUNTS.COM](mailto:INFO@SOLARMOUNTS.COM)