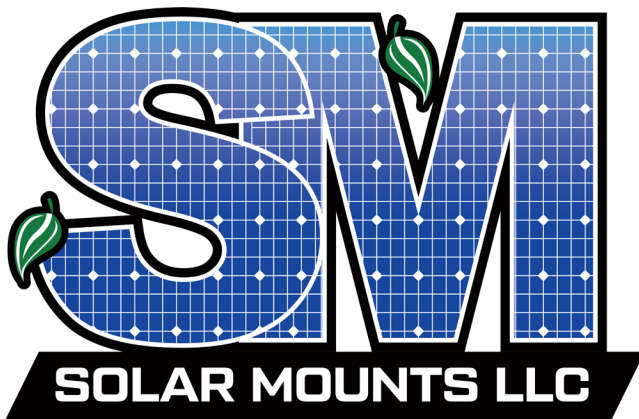


ECLIPSE SERIES SOLAR SHADE STRUCTURE

**THE MOST VERSATILE AND ECONOMIC SOLAR
SHADING STRUCTURE INDUSTRY WIDE**

**25 YEAR
WARRANTY**

Commercial & utility-scale solar racking with reduced components and minimal installation time. Over a decade of proven reliability and a 25-year warranty to serve the lifetime of your solar array.



Featuring fewest components and hardware connections in the market with high flexibility for rough and variable terrain. The panel attachments feature weather-resistant grounding clamps, hot-dipped & G185 galvanized steel and can sustain high wind and snow loads. Minimal foundation details with no massive rebar cages or foundation bolts for little to no parking lot intrusion.

Call for immediate estimates and layout design assistance from our expert sales team.



844-757-7225

WWW.SOLARMOUNTS.COM

300 WOOLLEY DR. | MARSHALL, MI 49068

INFO@SOLARMOUNTS.COM

TECHNICAL INFORMATION

**25 YEAR
WARRANTY**

FEATURES & BENEFITS

- **3 main components & minimal hardware**
- **Pre-welded tilt angles**
- **Universal brackets to fit any panel, industry wide**
- **Stocked components for industry best lead times**
- **PE stamped drawings**



TECHNICAL CHARACTERISTICS

APPLICATION	Parking Lot, Sidewalk, Building Entrance, Agrivoltaics, Retainage Basin, etc.
FOUNDATION	Standard 12" Diameter and Helical Options
ORIENTATION	1-3 High (Portrait)
TRUSS STYLE	2 Post, Single Slope
POST SPACING	27'-0" Standard Custom Options Available
TILT ANGLES	3° Standard Custom Options Available
CLEARANCE	8'-0" Standard ≤ 14'-6" Custom Options
MAX GRADE	EW / NS 15° Tolerance
SNOW LOAD	0 - 80 PSF
WIND LOAD	0 - 170 MPH
MATERIAL	Hot-Dipped, G185 Galvanized Steel
MODULE CAPABILITY	Any Module, Industry Wide
WARRANTY	25 Year



844-757-7225

WWW.SOLARMOUNTS.COM

300 WOOLLEY DR. | MARSHALL, MI 49068

INFO@SOLARMOUNTS.COM

COMPONENET OVERVIEW

**25 YEAR
WARRANTY**

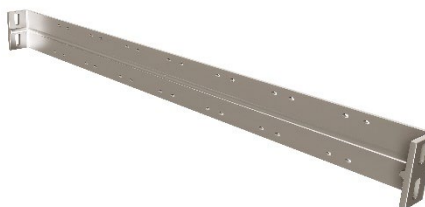
MAIN COMPONENTS

TRUSS

[PAINTED FINISHES AVAILABLE]

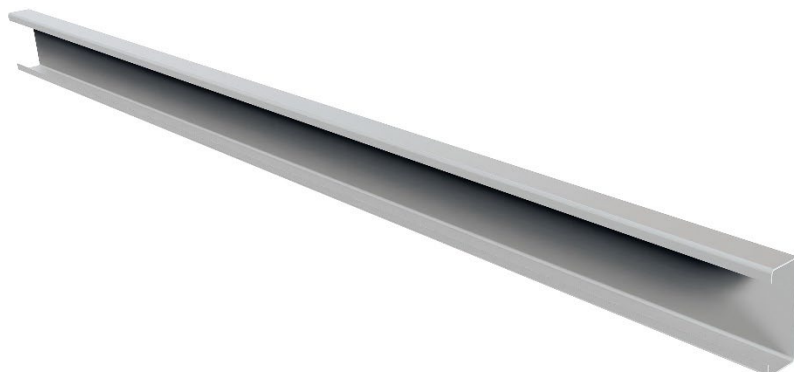


PURLIN STIFFENER

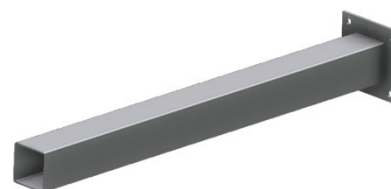


POST

[PAINTED FINISHES AVAILABLE]



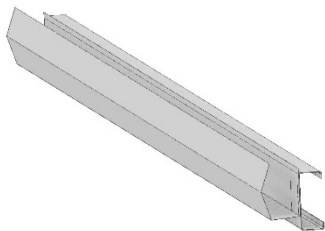
27'-0" PURLIN



3-HIGH KICKER

MODIFICATION OPTIONS

WATERPROOFING GUTTERS & DOWNSPOUTS



SNOW GAURDS



LED LIGHTING

