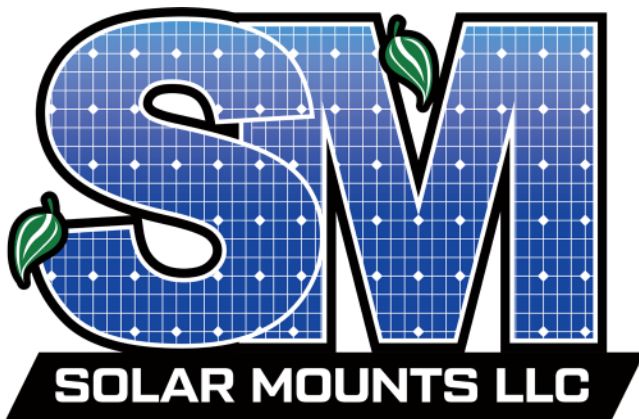


# ECLIPSE SERIES SOLAR SHADING STRUCTURE

**25 YEAR  
WARRANTY**

***THE MOST VERSATILE AND ECONOMIC SOLAR  
SHADING STRUCTURE INDUSTRY WIDE***

**Commercial & utility-scale solar racking with reduced components and minimal installation time. Over a decade of proven reliability and a 25-year warranty to serve the lifetime of your solar array.**



**Featuring fewest components and hardware connections in the market with high flexibility for rough and variable terrain. The panel attachments feature weather-resistant grounding clamps, hot-dipped & G185 galvanized steel and can sustain high wind and snow loads. Minimal foundation details with no massive rebar cages or foundation bolts for little to no parking lot intrusion.**

**Call for immediate estimates and layout design assistance from our expert sales team.**



**844-757-7225**

[WWW.SOLARMOUNTS.COM](http://WWW.SOLARMOUNTS.COM)

**300 WOOLLEY DR. | MARSHALL, MI 49068**

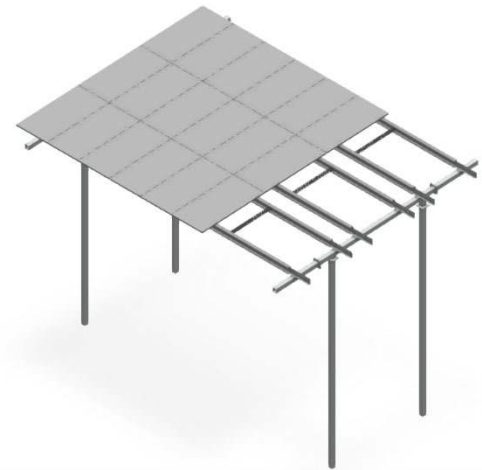
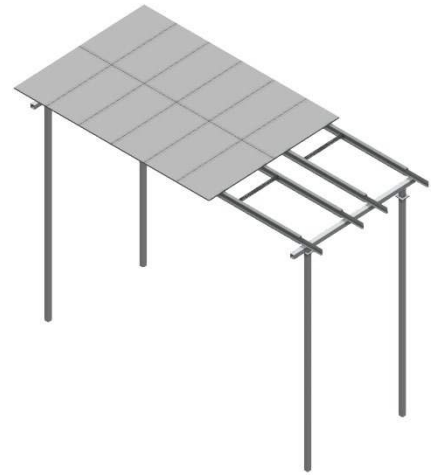
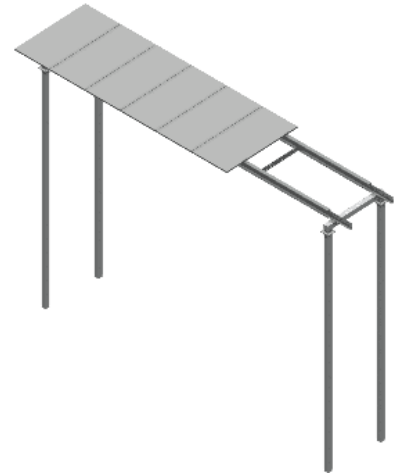
[INFO@SOLARMOUNTS.COM](mailto:INFO@SOLARMOUNTS.COM)

# TECHNICAL INFORMATION

**25 YEAR  
WARRANTY**

## FEATURES & BENEFITS

- **3 main components & minimal hardware**
- **Pre-welded tilt angles**
- **Universal brackets to fit any panel, industry wide**
- **Stocked components for industry best lead times**
- **PE stamped drawings**



## TECHNICAL CHARACTERISTICS

APPLICATION	Parking Lot, Sidewalk, Building Entrance, Agrivoltaics, Retainage Basin, etc.
FOUNDATION	Standard 12" Diameter and Helical Options
ORIENTATION	1-3 High (Portrait)
TRUSS STYLE	2 Post, Single Slope
POST SPACING	27'-0" Standard Custom Options Available
TILT ANGLES	3° Standard Custom Options Available
CLEARANCE	8'-0" Standard ≤ 14'-6" Custom Options
MAX GRADE	EW / NS 15° Tolerance
SNOW LOAD	0 - 80 PSF
WIND LOAD	0 - 170 MPH
MATERIAL	Hot-Dipped, G185 Galvanized Steel
MODULE CAPABILITY	Any Module, Industry Wide
WARRANTY	25 Year



**844-757-7225**

[WWW.SOLARMOUNTS.COM](http://WWW.SOLARMOUNTS.COM)

300 WOOLLEY DR. | MARSHALL, MI 49068

[INFO@SOLARMOUNTS.COM](mailto:INFO@SOLARMOUNTS.COM)

# COMPONENET OVERVIEW

**25 YEAR  
WARRANTY**

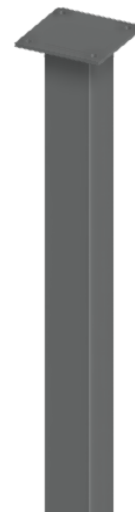
## MAIN COMPONENTS

### **2-HIGH TRUSS**

[PAINTED FINISHES AVAILABLE]



### **POST** [PAINTED FINISHES AVAILABLE]



### **PURLIN STIFFENER**

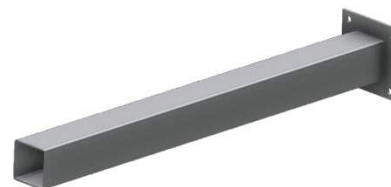


### **1-HIGH TRUSS**

[PAINTED FINISHES AVAILABLE]



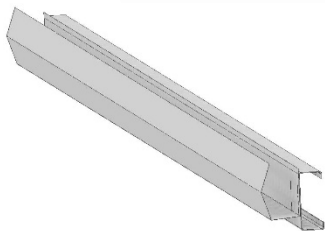
### **3-HIGH KICKER**



### **27'-0" PURLIN**

## MODIFICATION OPTIONS

### **WATERPROOFING GUTTERS & DOWNSPOUTS**



### **SNOW GAURDS**



### **LED LIGHTING**

